

STOCK CONTAINMENT



WHY CONTAINMENT FEED?

- Conserve ground cover
- Maintain ewe condition
- Reduced time, labour, diesel
- Can use pens for other purposes



SITE SELECTION AND PEN SETUP

- Slope – 2 to 4%
- Soil type
- Location to other facilities
- Shade/shelter
- Adequate space



PEN SIZE: MOB SIZE / STOCK DENSITY = AREA REQUIRED

5 – 10m² / ewe
9 – 25m² / cattle

Ideal mob size
250-300 (sheep)
50-200 (cattle)

COMMUNAL TROUGH

- Low cost
- Can be labour intensive
- Easy way to feed – can use basic feed cart
- Need plenty of space per animal

<https://www.youtube.com/watch?v=zVhriwemUmY&t=2s>



FEED TROUGH IN FENCELINE

- Quick to feed
- Need large area per ewe
- Can build trough to suit feed ration





FEED TROUGH IN PEN

- Double-sided access
- Reduces cost of troughing
- More labour intensive



SELF FEEDERS

- Multi-use
- Train sheep to self-feed
- Adequate no. per mob
- Monitor carefully





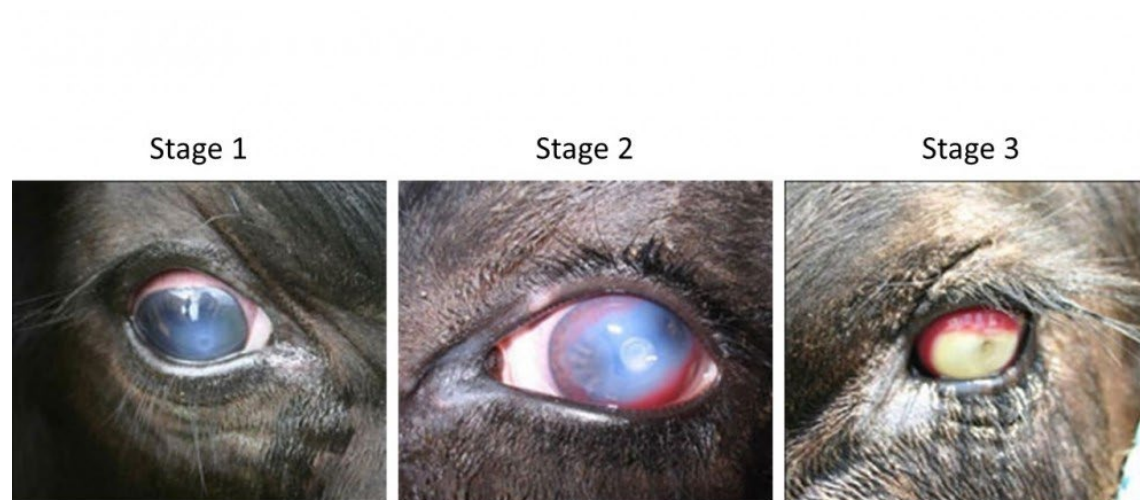
WATER REQUIREMENTS

Stock Type	Consumption per head per day (L)
Sheep – Weaners	2 - 4
Adult dry sheep	
<i>Pasture</i>	2 - 6
<i>Saltbush</i>	4 - 12
Ewes with Lambs	4 - 10

Young cattle	25-50
Dry cattle (400kg)	35-80
Lactating cows	40-100

HEALTH ISSUES

- Acidosis ★
- Prolapse
- Pinkeye ★
- Pulpy kidney
- Campylobacter
- Metabolic disease
 - Pregnancy toxaemia
 - Hypocalcaemia
 - Hypomagnesemia



Photos from MSU Extension

FAECAL MONITORING



Commonly seen when a poor-quality diet low in protein and carbohydrates, high in low quality fibre.



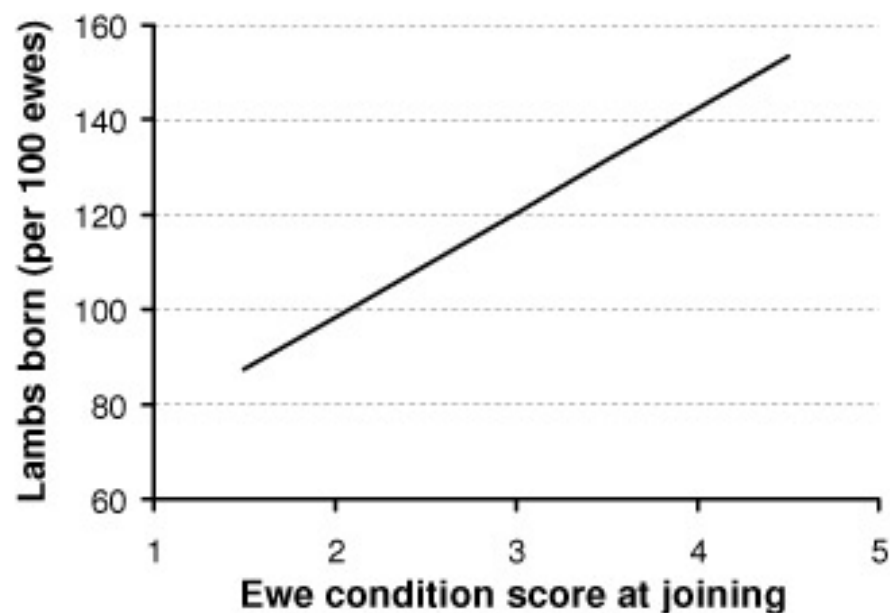
Stacked 'pat', solid, intact and 'weetbix' consistency. Ideal target consistency when on a grain and roughage diet.



Grey, runny manure and evidence of gas bubbles or undigested starch (white patches) indicates rumen acidosis.

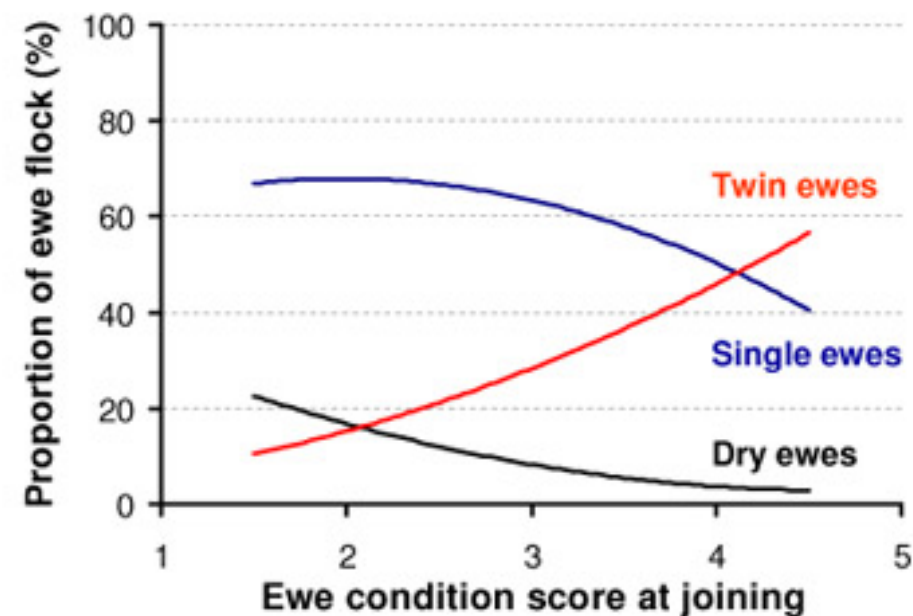
CONDITION SCORING

Ewe condition score at joining and number of lambs born



www.lifetimewool.com

Ewe condition score at joining and pregnancy status



www.lifetimewool.com

RELEASING FROM CONTAINMENT

- Rumen adjustment
- Release late in the day
- Transition over 10-14 days
- Be mindful of wool quality

