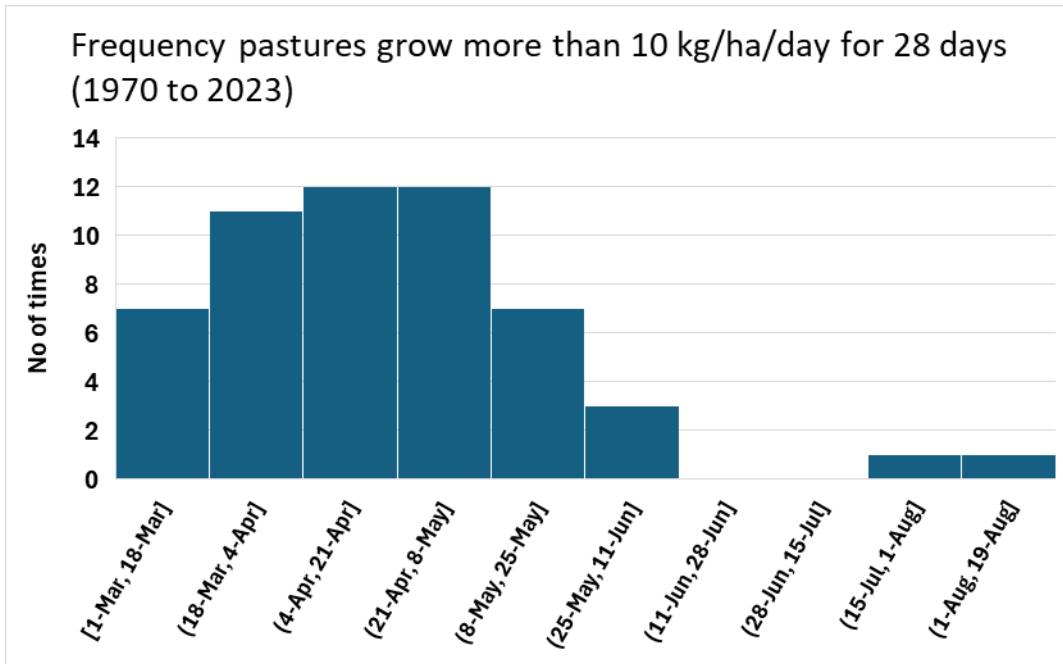


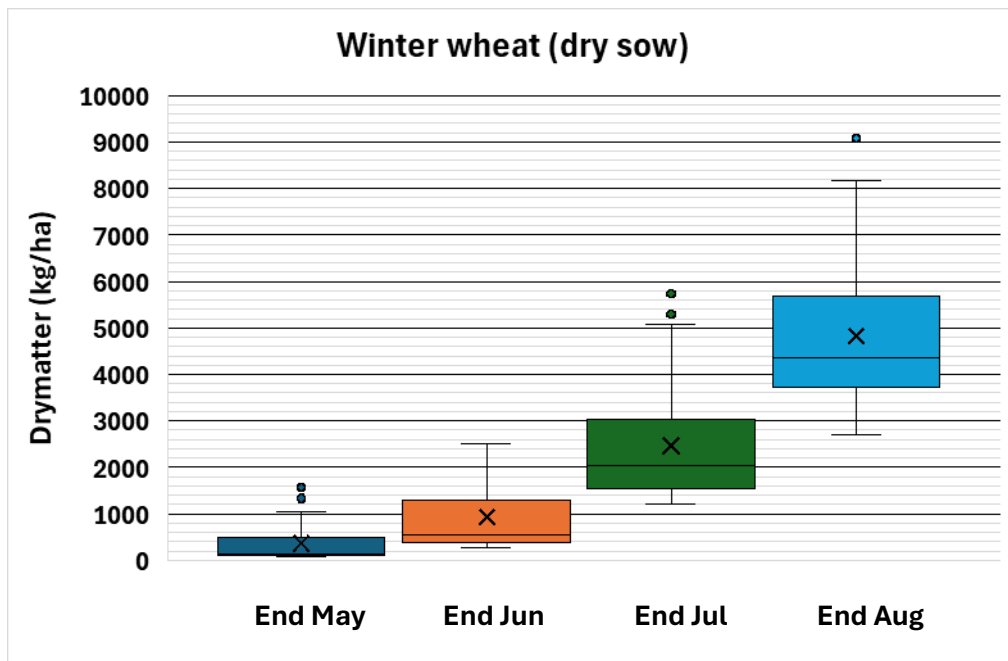
Ararat

These graphs & tables are to be used as a guide only in conjunction with the Autumn/Winter Pasture Planning Workshop materials. Every effort is made to ensure this information is accurate. All users who rely on this information do so at their own risk ©2025. All information produced by Southern Farming Systems is copyright and is not to be reproduced in any form or distributed to other persons without written permission.

Frequency of different “start dates”¹



Anticipated range in crop growth (kg/ha) each month from sowing on April 1 each year²

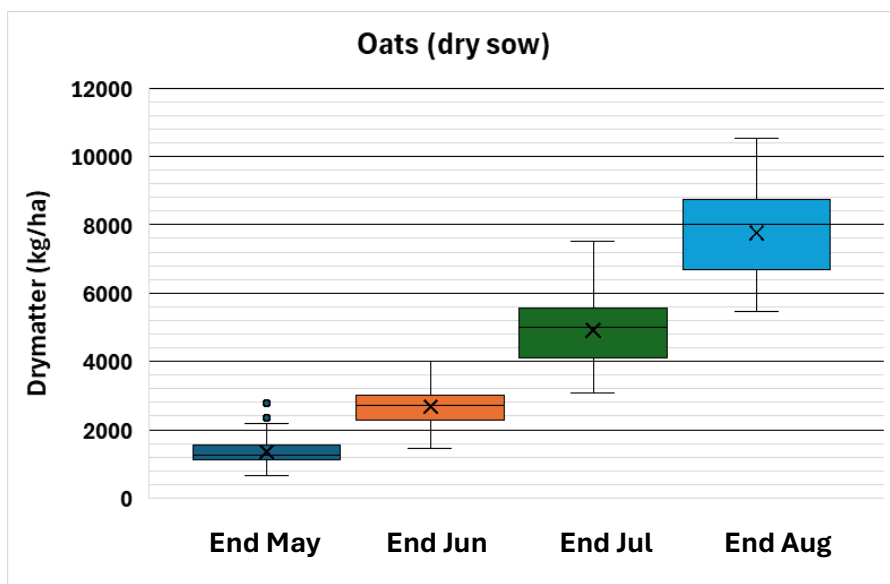
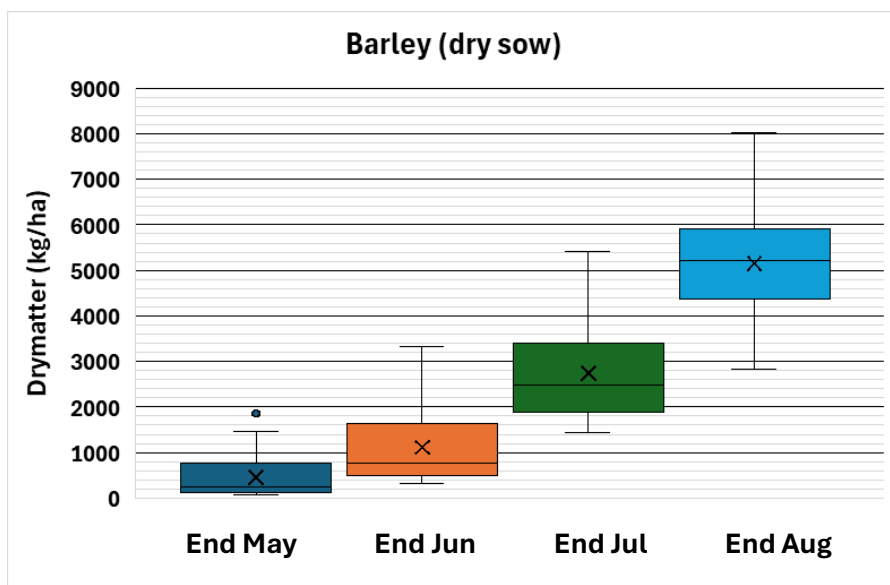


¹ Start date refers to a period of 4 consecutive weeks where pasture growth is greater than 10 kg/ha/day (i.e. 70 kg/ha/week).

² Crop could be sown dry on April 1, with growth only commencing with adequate rain.

Ararat

These graphs & tables are to be used as a guide only in conjunction with the Autumn/Winter Pasture Planning Workshop materials. Every effort is made to ensure this information is accurate. All users who rely on this information do so at their own risk ©2025. All information produced by Southern Farming Systems is copyright and is not to be reproduced in any form or distributed to other persons without written permission.



Anticipated average crop growth (kg/ha) at end of month from sowing on April 1 each year (rounded to closest 50 kg)

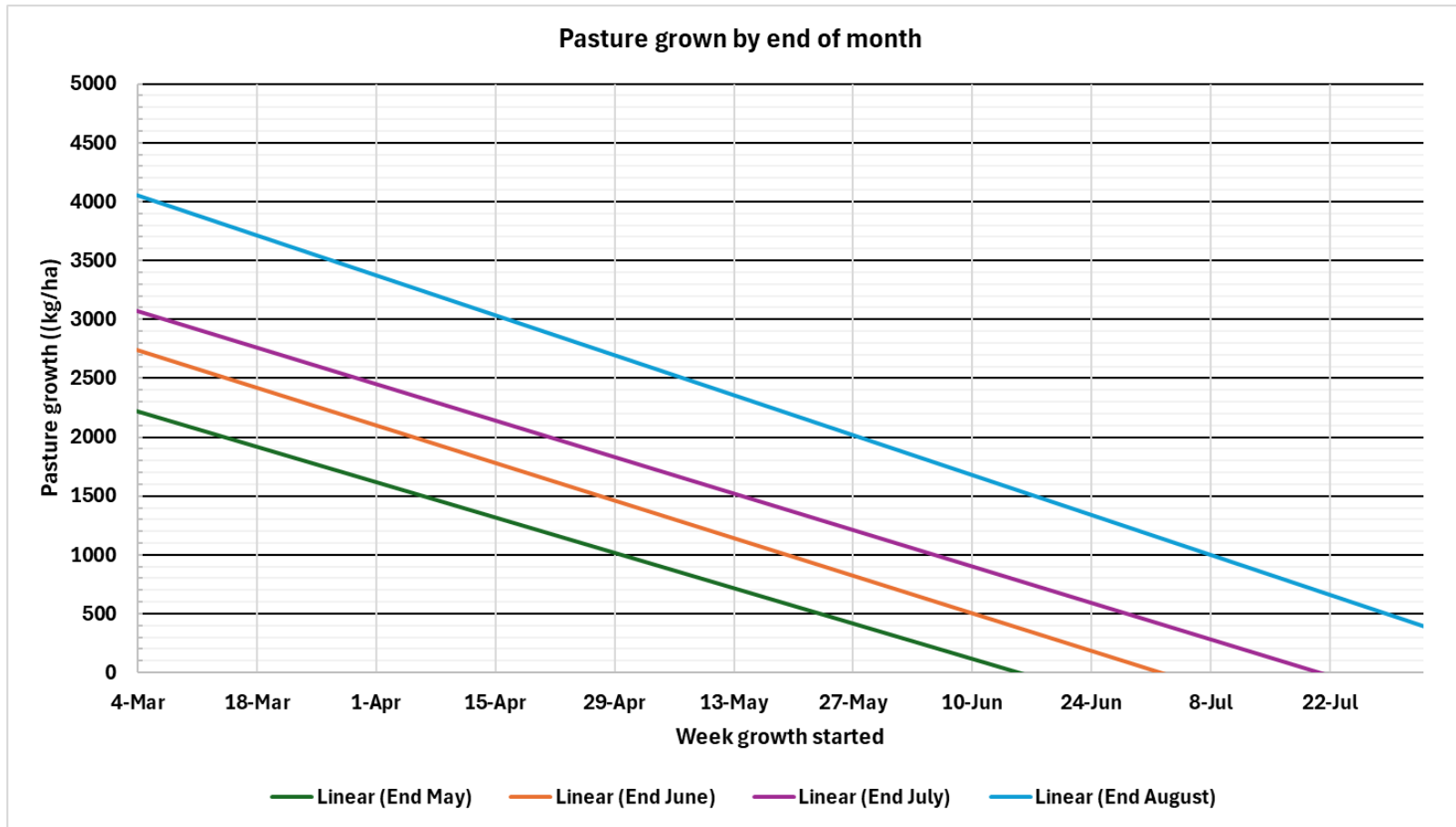
Date	Wheat (kg/ha)	Barley (kg/ha)	Oats (kg/ha)
End May	350	450	1350
End June	950	1100	2700
End July	2450	2750	4900
End August	4800	5150	7750



Ararat

These graphs & tables are to be used as a guide only in conjunction with the Autumn/Winter Pasture Planning Workshop materials. Every effort is made to ensure this information is accurate. All users who rely on this information do so at their own risk ©2025. All information produced by Southern Farming Systems is copyright and is not to be reproduced in any form or distributed to other persons without written permission.

Anticipated pasture growth³ (kg/ha) at end of month from different “start dates”⁴



³ Phalaris and sub clover

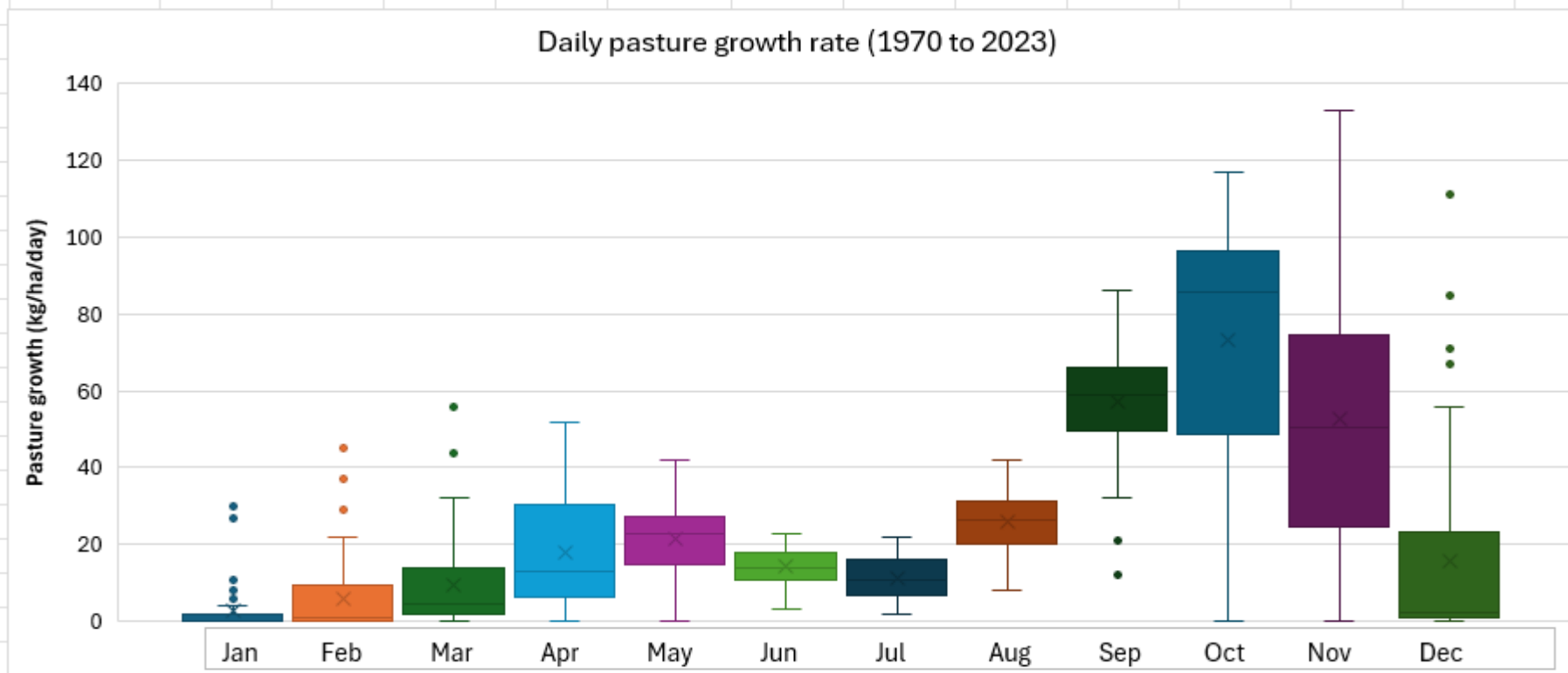
⁴ Start date refers to a period of 4 consecutive weeks where pasture growth is greater than 10 kg/ha/day (i.e. 70 kg/ha/week).



This program received funding from the Australian Government’s Future Drought Fund.

Ararat

These graphs & tables are to be used as a guide only in conjunction with the Autumn/Winter Pasture Planning Workshop materials. Every effort is made to ensure this information is accurate. All users who rely on this information do so at their own risk ©2025. All information produced by Southern Farming Systems is copyright and is not to be reproduced in any form or distributed to other persons without written permission.



	Jan	Feb	Mar	Apr	May	Jun	Jul	Aug	Sep	Oct	Nov	Dec
Average 'X'	3	6	10	18	22	14	11	26	57	73	53	16
Highest	30	45	56	52	42	23	22	42	86	117	133	111
Lowest	0	0	0	0	0	3	2	8	12	0	0	0
Decile 2.5	0	0	2	7	15	11	7	20	50	53	25	1
Median '-'	0	1	5	13	23	14	11	27	59	86	51	3
Decile 7.5	2	9	14	30	27	18	16	31	66	96	74	23



This program received funding from the Australian Government's Future Drought Fund.